

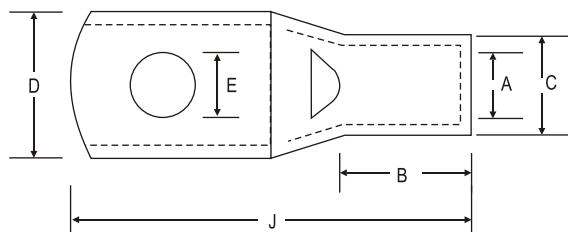
COPPER CRIMPING TERMINALS WITH INSPECTION HOLE FOR COPPER CONDUCTOR (HEAVY DUTY)

Braco Copper Tube Crimping Terminals are manufactured from Electrolytic Copper tube. The dimensions of the tube are designed to obtain the most efficient electrical conductivity and mechanical strength to resist vibration and pull out. These are used for terminating any size of cables, electrical switching equipments, where vibration is critical.

Terminals are annealed to guarantee optimum ductility which is an absolute necessity for connectors which will have to withstand the sever deformation arising when compressed and any bending of the palm during installation. In application subject to vibration, terminals still have to perform a reliable connection, annealing plays a vital role in avoiding cracking or breaks between the barrel and palm.

The presence of inspection hole facilitates full insertion of conductor while the barrel length has been designed to allow easy and accurate position dies during the crimping operation.

Tin plating on the terminals avoids oxidization and achieves maximum corrosion protection

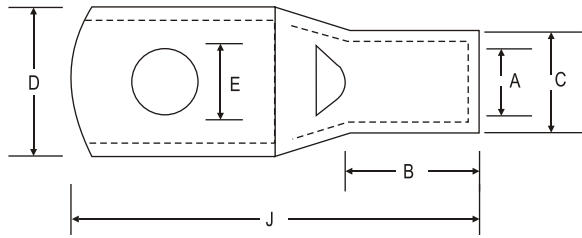


Size Sq. mm	Dimensions						Code No.
	E	A	C	D	B	J	
1.5	4.2	1.8	3.7	8	5	16	CT - 711
	5.2	1.8	3.7	8	5	16	CT - 538
	6.4	1.8	3.7	10	5	18	CT - 539
2.5	4.2	2.4	4.0	8	7	18	CT - 388
	5.2	2.4	4.0	10	7	20	CT - 540
	6.5	2.4	4.0	10	7	20	CT - 541
4	4.2	3.1	4.8	10	7	20	CT - 564
	5.2	3.1	4.8	10	7	20	CT - 389
	6.5	3.1	4.8	10	7	20	CT - 543
6	4.2	3.1	4.8	11.5	7	24	CT - 762
	5.2	3.1	4.8	10	7	20	CT - 564
	6.5	3.1	4.8	10	7	20	CT - 543
10	4.2	3.1	4.8	11.5	7	25	CT - 763
	5.2	3.8	5.5	10	9	23	CT - 390
	6.5	3.8	5.5	12	9	27	CT - 544
10	8.4	3.8	5.5	12	9	27	CT - 545
	10.5	3.8	5.5	15	9	32	CT - 854
	5.2	4.5	6.2	12	9	25	CT - 822
10	6.5	4.5	6.2	12	9	25	CT - 353
	8.4	4.5	6.2	12	9	27	CT - 547
	10.5	4.7	7.1	14	10	32	CT - 855
10	12.7	4.7	7.1	18	10	32	CT - 856

Material Copper BS: 1977
Finish: Electro Tinned

Size Sq. mm	Dimensions						Code No.
	E	A	C	D	B	J	
16	5.2	5.4	7.1	12	12	30	CT - 696
	6.4	5.4	7.1	12	12	30	CT - 354
	8.4	5.4	7.1	12	12	32	CT - 549
	10.5	5.5	7.9	14.5	13	35	CT - 657
	12.7	5.5	7.9	18	13	39	CT - 858
25	6.4	6.8	8.8	13	12	30	CT - 355
	8.4	6.8	8.8	16	12	37	CT - 551
	10.5	6.8	8.8	16	12	35	CT - 552
	12.7	6.8	8.8	16.5	14	40	CT - 765
35	6.5	8.2	10.6	15.3	12	35	CT - 542
	8.4	8.2	10.6	15.3	12	35	CT - 356
	10.5	8.2	10.6	18	12	38	CT - 554
	12.7	8.2	10.6	17	15	42	CT - 853
50	6.5	9.5	12.4	18	16	43	CT - 746
	8.4	9.5	12.4	18	16	43	CT - 357
	10.5	9.5	12.4	18	16	43	CT - 556
	12.7	9.5	12.4	18	16	43	CT - 698
70	17.0	9.5	12.4	22.0	18	52	CT - 699
	6.4	11.2	14.7	21.0	18	50	CT - 748
	8.4	11.2	14.7	21.0	18	50	CT - 557
70	10.5	11.2	14.7	21.0	18	50	CT - 358
	13.0	11.2	14.7	21.0	18	50	CT - 559
	15.0	11.2	14.7	25.0	20	55	CT - 795
	17.0	11.2	14.7	25.0	20	55	CT - 780
	21.0	11.2	14.7	26.0	20	55	CT - 781





Size Sq. mm	Dimensions						Code No.
	E	A	C	D	B	J	
95	8.4	13.5	17.4	25	20	55	CT - 752
	10.5	13.5	17.4	25	20	55	CT - 359
	13.0	13.5	17.4	25	20	55	CT - 561
	15.0	13.5	17.4	26	20	55	CT - 796
	17.0	13.5	17.4	26	22	60	CT - 672
	21.0	13.5	17.4	28	22	60	CT - 673
120	8.5	15.0	19.4	28	22	64	CT - 782
	10.5	15.0	19.4	28	22	64	CT - 700
	12.7	15.0	19.4	28	22	64	CT - 241
	15.0	15.0	19.4	28	22	64	CT - 797
	17.0	15.0	19.4	28	22	64	CT - 546
	21.0	15.0	19.4	28	22	64	CT - 798
150	8.4	16.5	21.2	30	26	69	CT - 783
	10.5	16.5	21.2	30	26	69	CT - 676
	12.7	16.5	21.2	30	26	69	CT - 242
	15.0	16.5	21.2	30	26	69	CT - 799
	17.0	16.5	21.2	30	26	69	CT - 564
	21.0	16.5	21.2	30	26	69	CT - 565
185	10.5	18.5	23.5	34	32	78	CT - 652
	12.7	18.5	23.5	34	32	78	CT - 639
	15.0	18.5	23.5	34	32	78	CT - 800
	17.0	18.5	23.5	34	32	78	CT - 243
	21.0	18.5	23.5	34	32	78	CT - 704

Size Sq. mm	Dimensions						Code No.
	E	A	C	D	B	J	
240	10.5	21	26.5	38	38	92	CT - 787
	12.7	21	26.5	38	38	92	CT - 705
	15.0	21	26.5	38	38	92	CT - 801
	17.0	21	26.5	38	38	92	CT - 244
	21.0	21	26.5	38	38	92	CT - 567
300	10.5	23.5	30	43	42	101	CT - 568
	12.7	23.5	30	43	42	101	CT - 597
	15.0	23.5	30	43	42	101	CT - 802
	17.0	23.5	30	43	42	101	CT - 245
	21.0	23.5	30	43	42	101	CT - 569
400	17.0	26.8	34.8	50	44	114	CT - 246
	21.0	26.8	34.8	50	44	114	CT - 571
500	17.0	30	39	56	48	117	CT - 596
	21.0	30	39	56	48	124	CT - 247
630	-	35	45	65	56	144	CT - 761
	17.0	35	45	65	56	144	CT - 807
	21.0	35	45	65	56	144	CT - 248
800	-	39	50.6	72.9	78	170	CT - 599
	21.0	39	50.6	72.9	78	170	CT - 808
1000	-	43	56.2	80.8	90	200	CT - 590
	21.0	43	56.2	80.8	90	200	CT - 809